

Template Foodbox - 26 oz. / Print size 365mm x 163,5mm (including bleed)

Open this file in your design software and save it in AI/PDF format.

Remember to remove the "design info" layer and any information that does not need to be printed

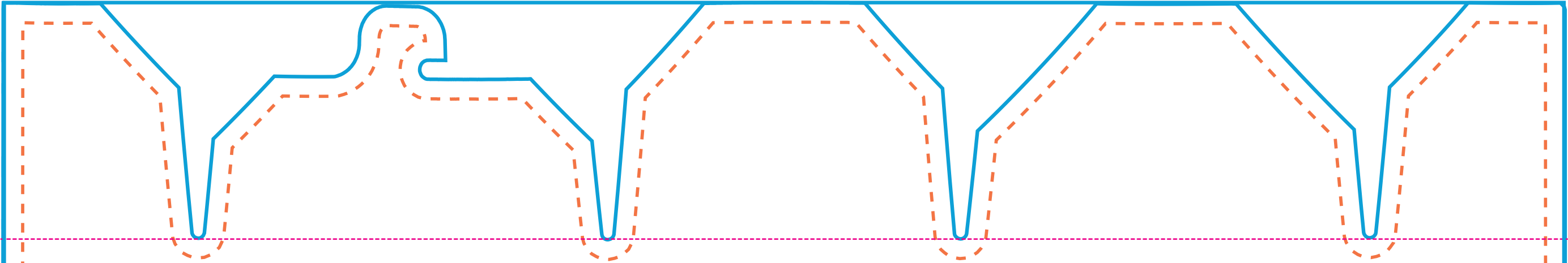


Let the design extend to the blue line (this is your bleed)



Place text and important information inside the orange dashed line

Note: Your design must be rectangular. We will provide you with a print ready proof with correct distortions.



Template Foodbox - 26 oz. / Print size 365mm x 163,5mm (including bleed)

Open this file in your design software and save it in AI/PDF format.

Remember to remove the "design info" layer and any information that does not need to be printed



Let the design extend to the blue line (this is your bleed)



Place text and important information inside the orange dashed line

Note: Your design must be rectangular. We will provide you with a print ready proof with correct distortions.